

Dashboards

From a Crawl to a Sprint

Holly Stovall
Bonnie Hurford
Elizabeth Northern
Christina Kraines



2014-2018

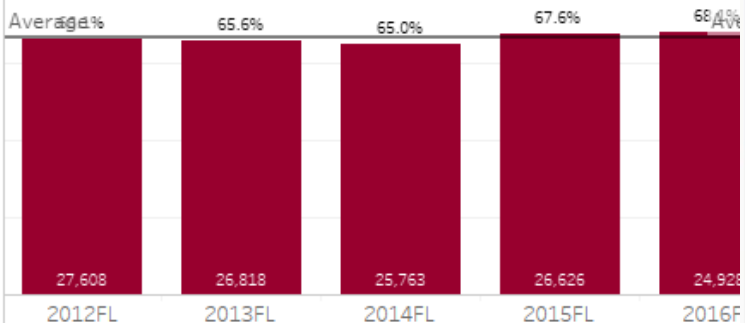
You're here...
 What could
 be?

Department	Campus					Total
	NE	NW	SE	SO	TR	
ABDR	0	0	0	176	0	176
ACCT	405	351	434	204	198	1590
ACNT	69	20	24	281	0	394
AERM	0	902	0	0	0	902
ANTH	37	0	0	0	91	128
ARCH	0	0	119	0	0	119
ARCT	0	0	2	0	0	2
ARTC	197	0	0	0	0	197
ARTS	1413	938	823	641	415	4230
ARTV	39	0	0	0	0	39
AUMT	0	0	0	370	0	370
AVNC	0	22	0	0	0	22
BCIS	931	593	551	448	318	2841
BIOL	2256	1144	1763	1300	723	7186
BMGT	254	234	241	287	107	1123
BNKG	0	0	0	9	0	9
BUSG	40	338	31	27	0	436
BUSI	298	184	245	244	128	1097
CDEC	311	0	0	0	0	311
CETT	0	0	0	154	0	154
CHEF	0	0	165	0	0	165
CHEM	664	435	591	342	292	2324
CJLE	0	188	0	0	0	188
CJSA	0	61	0	0	0	61
CNBT	0	0	111	0	0	111
COMM	268	23	26	0	20	337
COSC	670	758	664	501	253	2846
CPMT	18	0	0	50	0	68



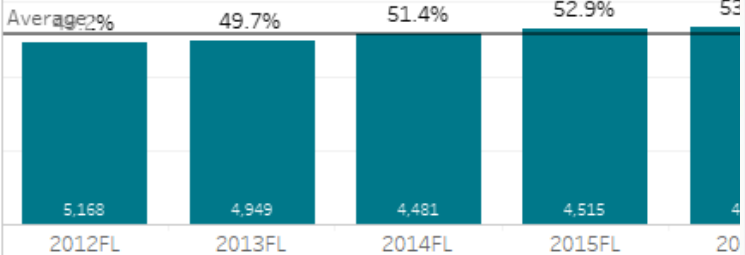
+ a b | e a u

FTIC First-Term Success Rates



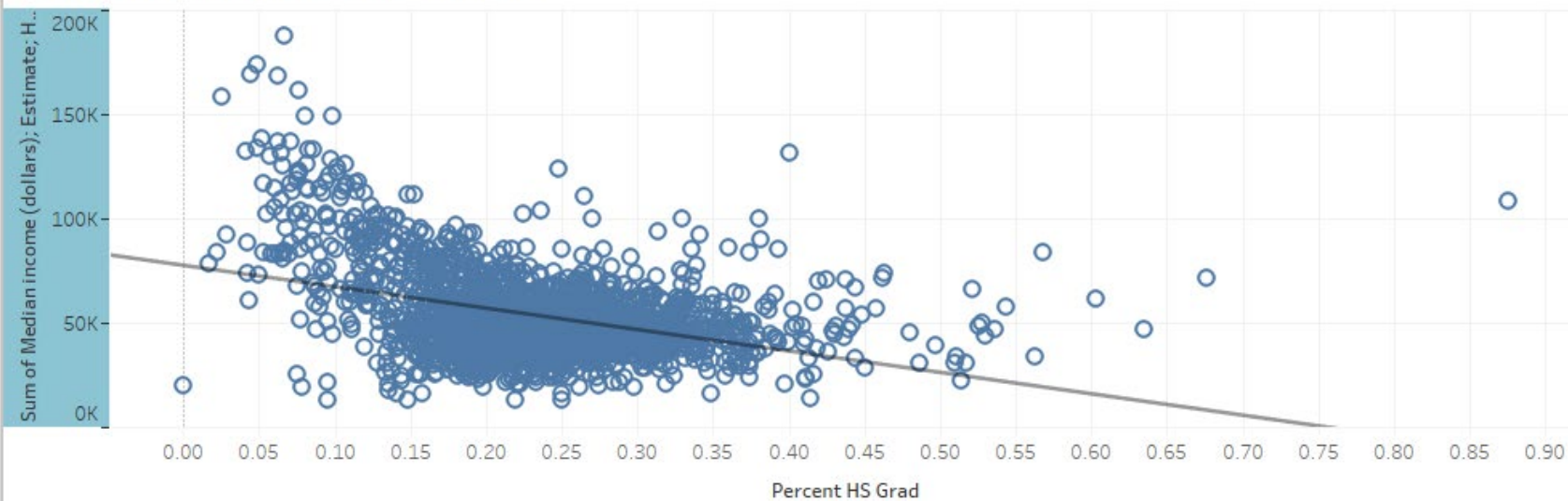
Total course enrollments are shown in bar.

Degree-seeking FTIC FL-to-FL Retention Rates

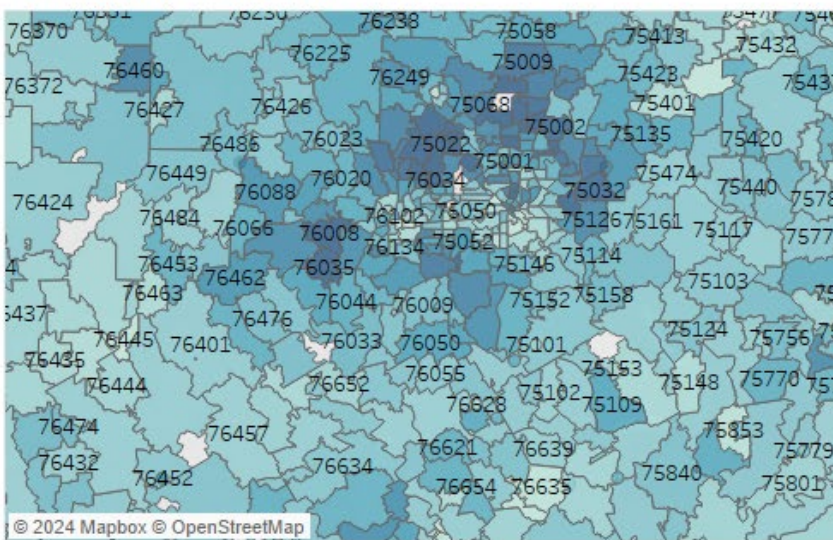


Cohort sizes are shown in bar.

Median Household Income vs Ed Level

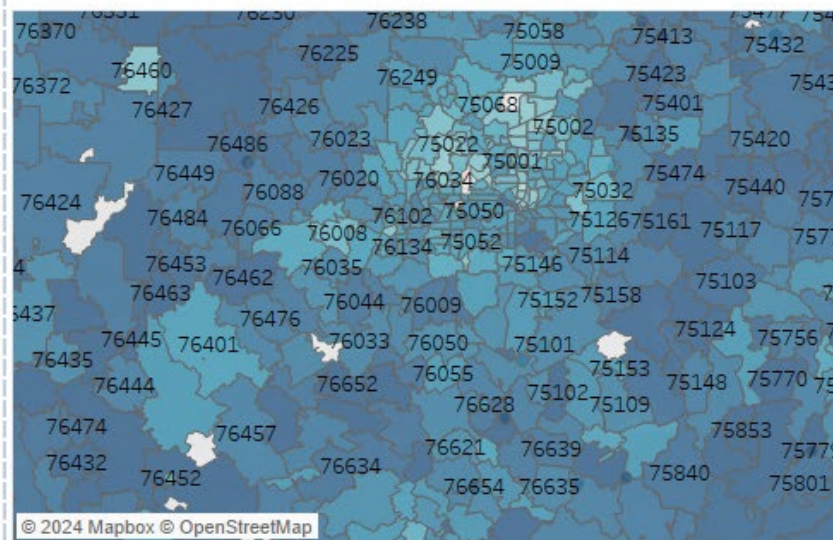


Median Household Income



Median Household Income

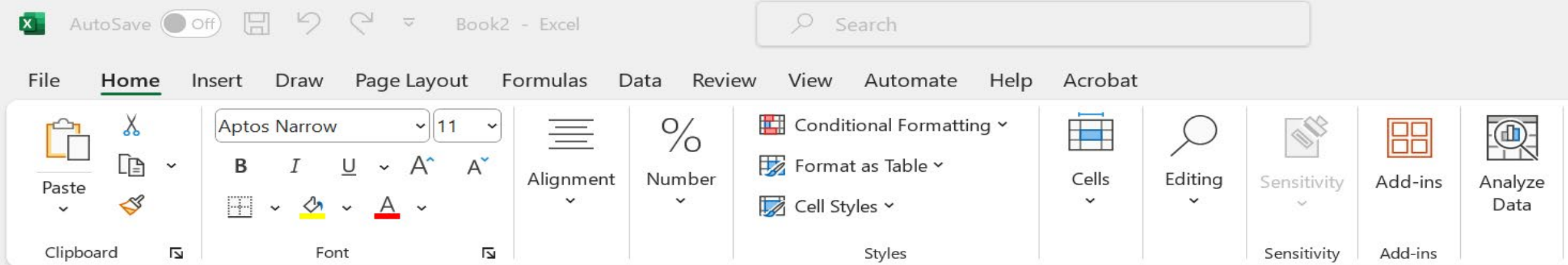
Percent with HS as Highest Education Level



Percent HS



You can't go alone...



What can Excel do?



2018-2020

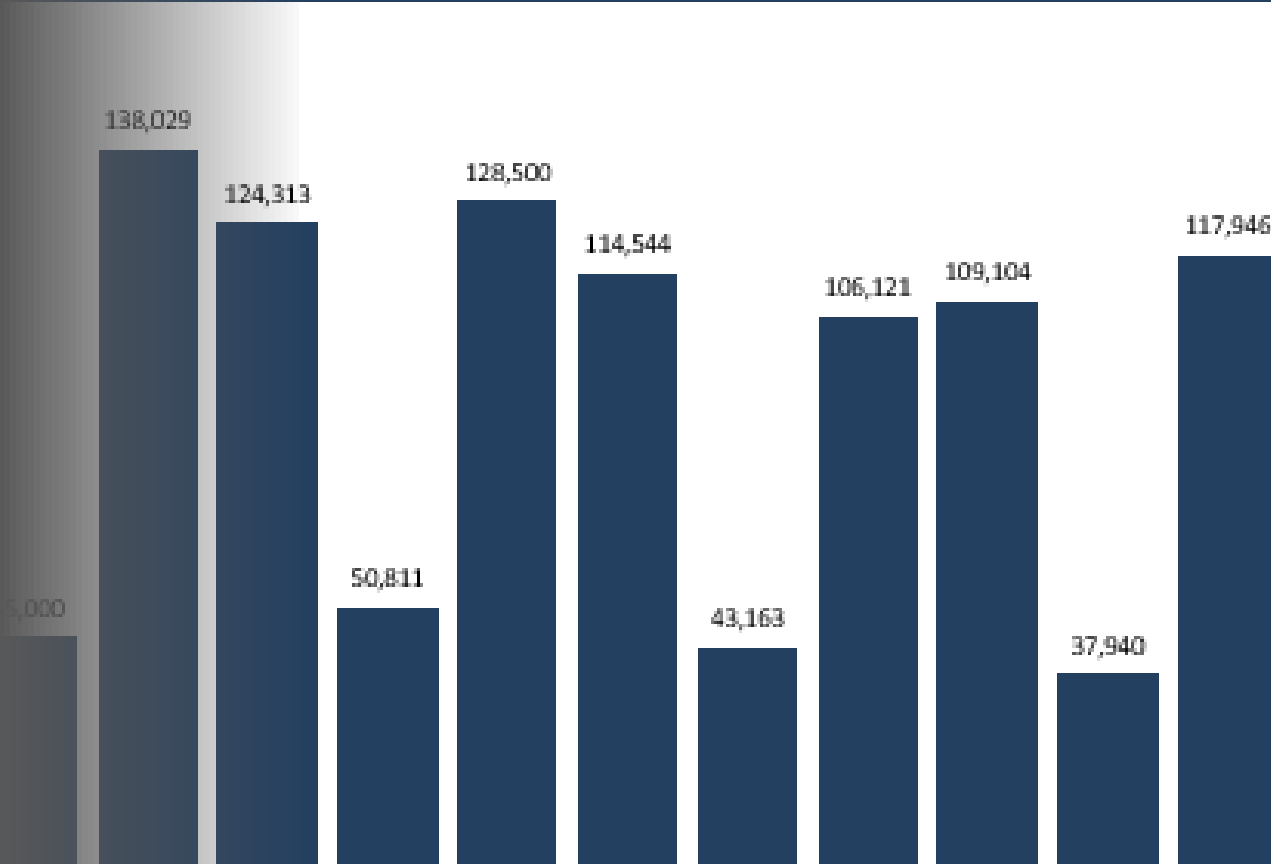
The Excel journey begins...

Summary of Course Enrollments

Do not select multiple campuses or subjects/courses

Subjects	Total ABDR	Total ACCT	Total ACNT
	Total AGCR	Total AIRP	Total ANES
	Total ARCE	Total ARCH	Total ARCT
	Total ARTS	Total ARTV	Total AUMT

Course Enrollments: Total All Subjects, District



Activity

Chat ... ☰ ✎

Teams

Chat

Assignments

Calendar

Calls

OneDrive

Shifts

Stream

Tasks by Pla...

Power BI

...

Apps

Recent

- STOVALL, HOLLY (You) 11:49 AM
You: Sent an image
- NORTHERN, ELIZABETH 10:42 AM
You: I've got a couple of balls in motion with Ti...
- Conversation about Accountin... 10:08 AM

STOVALL, HOLLY (You) Chat Files

07/2020 5:23 AM

March 2020 Welcome to Microsoft Teams...

Type a message

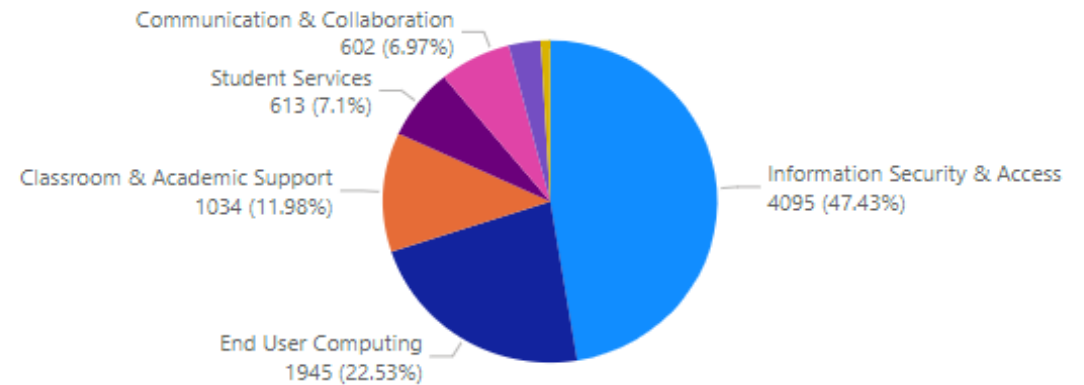
🗨️ 📎 📄 😊 🧠 🗨️

Summary Help Desk Ticket Status - 3/20/2020 to 4/13/2020

Table 1: Incidents by Service and Status

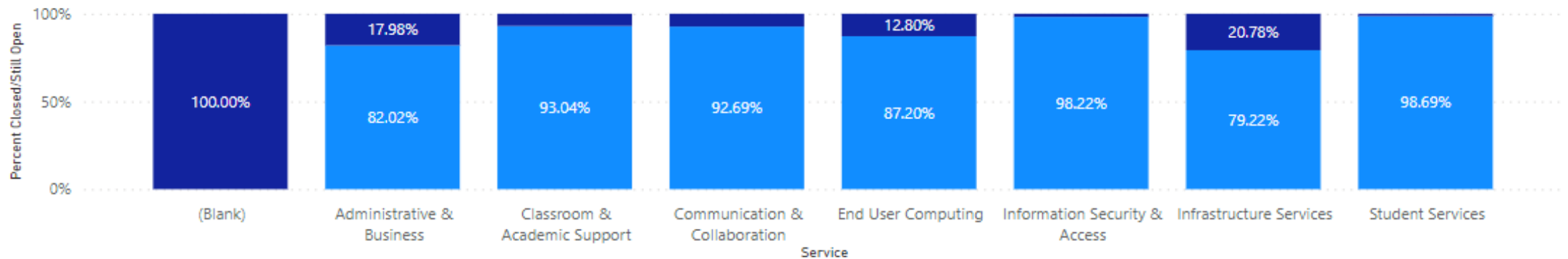
Status2 Service	Closed		Still Open		Total	
	Count	Percent	Count	Percent	Count	Percent
Administrative & Business	219	82.02%	48	17.98%	267	100.00%
Classroom & Academic Support	962	93.04%	72	6.96%	1034	100.00%
Communication & Collaboration	558	92.69%	44	7.31%	602	100.00%
End User Computing	1696	87.20%	249	12.80%	1945	100.00%
Information Security & Access	4022	98.22%	73	1.78%	4095	100.00%
Infrastructure Services	61	79.22%	16	20.78%	77	100.00%
Student Services	605	98.69%	8	1.31%	613	100.00%
Total	8123	94.08%	511	5.92%	8634	100.00%

Total Incidents by Service



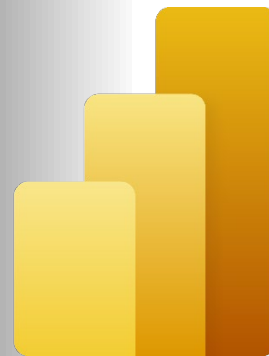
Percent Closed/Still Open by Service

Status2 ● Closed ● Still Open



2020-2024

The Excel journey continues...

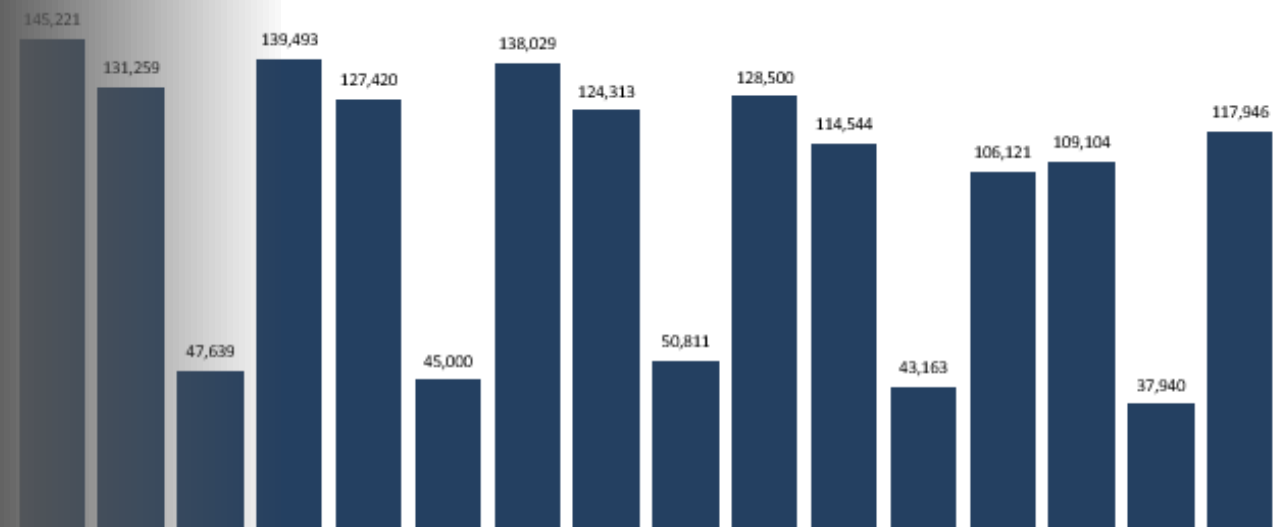


Summary of Course Enrollments

Choose a campus and subject/course: *Do not select multiple campuses or subjects/courses*

District	CN	Total All Subjects	Total ABDR	Total ACCT	Total ACNT
NE	NW	Total AERM	Total AGCR	Total AIRP	Total ANES
SE	SO	Total ANTH	Total ARCE	Total ARCH	Total ARCT
TR		Total ARTC	Total ARTS	Total ARTV	Total AUMT

Viewing Course Enrollments: Total All Subjects, District





Create a PivotTable to analyze worksheet data
[Article](#)

Use the Field List to arrange fields in a PivotTable
[Article](#)

Group or ungroup data in a PivotTable
[Article](#)

Filter data in a PivotTable
[Article](#)

Create a PivotChart
[Article](#)

Next: Share & coauthor

Create a PivotTable to analyze worksheet data

A PivotTable is a powerful tool to calculate, summarize, and analyze data that lets you see comparisons, patterns, and trends in your data. PivotTables work a little bit differently depending on what platform you are using to run Excel.

[Windows](#) [Web](#) [Mac](#) [iPad](#)

Microsoft Excel
Create a PivotTable

State of Sales	Column Labels	2012	2013	2012 Grand Total
Row Labels				
Alabama		27000	220700	247700
Alaska		600	22100	22700
Arizona		8100	27000	35100
Arkansas		2100	22000	24100
California		10000	28000	38000
Colorado		100	20000	20100
Connecticut		8700	23000	31700
Delaware		2000	20000	22000
District of Columbia		2000	20000	22000
Florida		20000	20000	40000
Georgia		2000	20000	22000
Hawaii		2000	20000	22000
Idaho		2000	20000	22000
Illinois		2000	20000	22000
Indiana		2000	20000	22000
Iowa		2000	20000	22000
Kansas		2000	20000	22000
Kentucky		2000	20000	22000
Louisiana		2000	20000	22000
Maine		2000	20000	22000
Maryland		2000	20000	22000
Massachusetts		2000	20000	22000
Michigan		2000	20000	22000
Minnesota		2000	20000	22000
Mississippi		2000	20000	22000
Missouri		2000	20000	22000
Montana		2000	20000	22000
Nebraska		2000	20000	22000
Nevada		2000	20000	22000
New Hampshire		2000	20000	22000
New Jersey		2000	20000	22000
New Mexico		2000	20000	22000
New York		2000	20000	22000
North Carolina		2000	20000	22000
North Dakota		2000	20000	22000
Ohio		2000	20000	22000
Oklahoma		2000	20000	22000
Oregon		2000	20000	22000
Pennsylvania		2000	20000	22000
Rhode Island		2000	20000	22000
South Carolina		2000	20000	22000
South Dakota		2000	20000	22000
Tennessee		2000	20000	22000
Texas		2000	20000	22000
Utah		2000	20000	22000
Vermont		2000	20000	22000
Virginia		2000	20000	22000
Washington		2000	20000	22000
West Virginia		2000	20000	22000
Wisconsin		2000	20000	22000
Wyoming		2000	20000	22000
Grand Total		111000	2000000	2111000

Program Demographic Headcounts by Campus, Term, Program Type, and Program

To Use Filters:

- 1) Select a Program Type
- 2) Select a Program Subject
- 3) Select a Program
- 4) Select a Gender and an Ethnicity

Do not select multiple program types, program groups, programs, genders, or ethnicities.

To reset filters, select All Types for Program Type, All Subjects for Program Subject, All Programs for Program, and All Students for Gender and Ethnicity.

Data exclude CE programs and credit types L and N.

A student can be enrolled in multiple programs at one time. Each unique combination of campus, program type, program group, and program is unduplicated.

Program Type

All Types

ECHS/Dual Credit

Field of Study

Technical

Transfer

Undecided

Program Subject

All Subjects

AART

AATE

ACCO

AFOS

AIRF

Gender

All Genders

Female

Male

Ethnicity

All Ethnicities

Asian

Black / African Amer...

Hispanic Latino

Other

White

Program

All Programs

AART.D001.UG - AA.Associate of ...

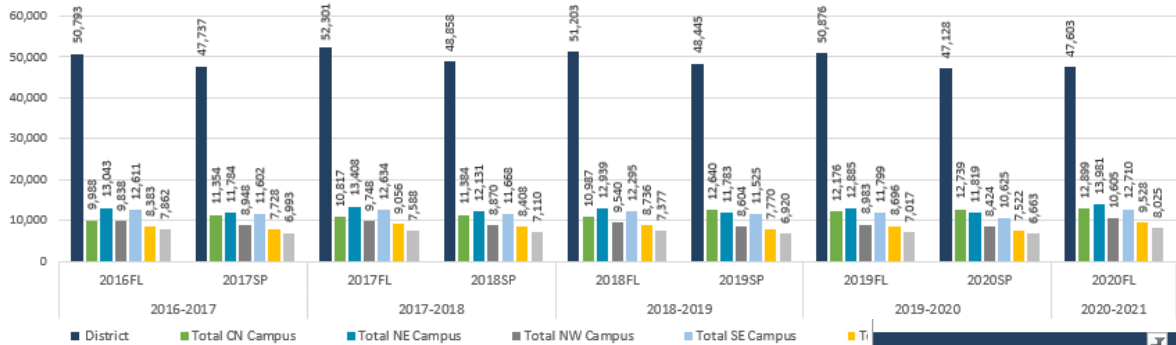
AART.D002.UG - AA.Associate of ...

AART.D003.UG - AA.Associate of ...

AART.D004.UG - AA.Associate of ...

AART.D005.UG - AA.Associate of ...

Viewing Headcounts for All Types, All Subjects, and All Programs for All Genders and All Ethnicities.



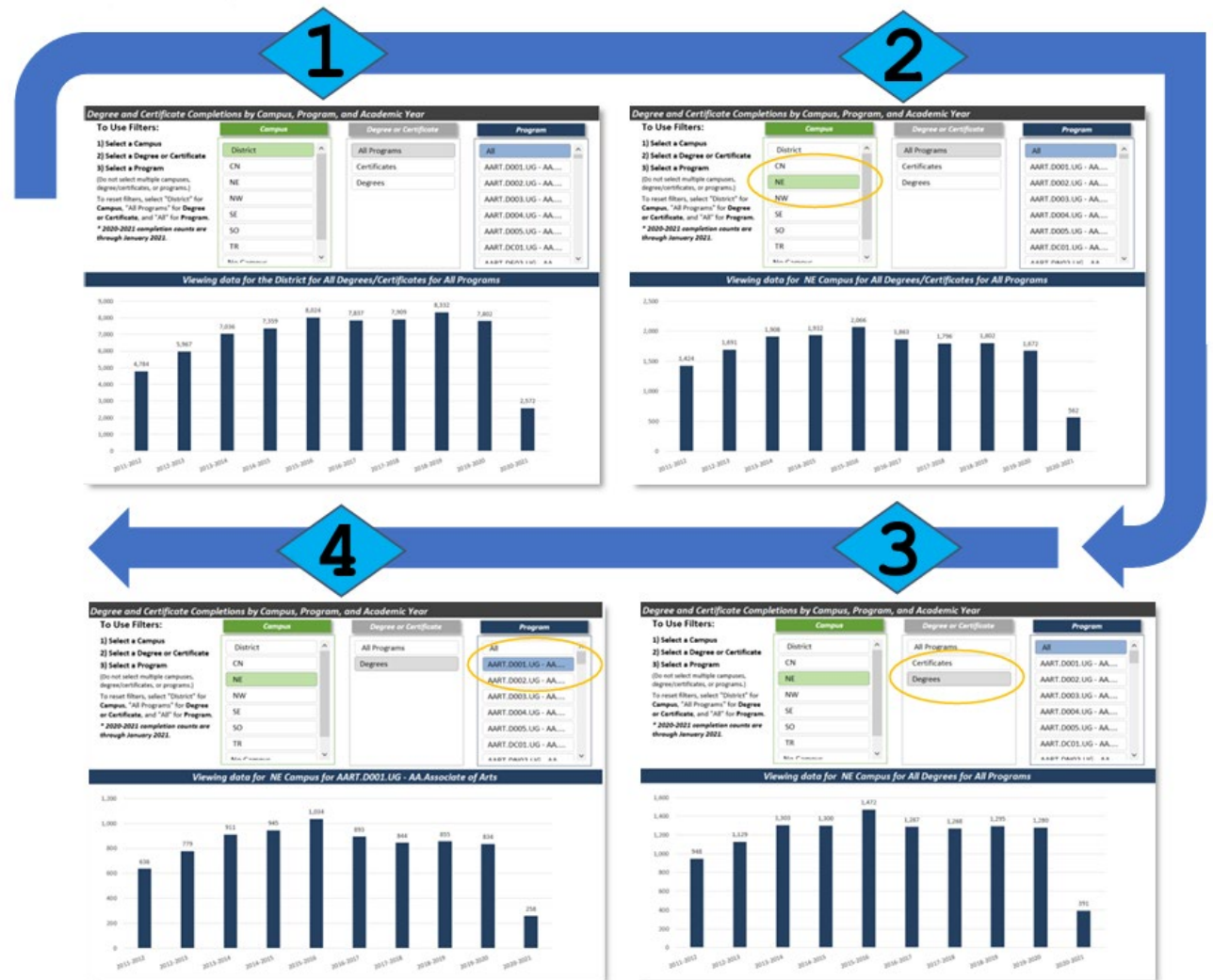
How many worksheets is too many worksheets....

	Total District	Total CN Campus	Total NE Campus	Total NW Campus	Total SE Campus	Total SO Campus	Total TR Campus
2016FL	50,793	9,988	13,043	9,838	12,611	8,383	7,862
Female	29,171	6,934	7,111	5,243	7,174	4,401	5,026
American Indian / Alaska Native	101	31	29	20	19	7	13
Asian	1,559	320	465	209	588	139	164
Black / African American	5,457	1,468	1,038	513	1,875	1,130	823
Hispanic Latino	9,633	1,669	1,891	1,974	2,347	1,772	2,139
International	252	45	64	29	115	34	43
Multiracial	800	181	200	154	205	118	139
Native Hawaiian / Pacific Islander	43	14	15	6	10	2	6
Unknown / Not Reported	339	61	99	54	83	58	62
White	10,987	3,145	3,310	2,284	1,932	1,141	1,637
Male	21,622	3,054	5,932	4,595	5,437	3,982	2,836
American Indian / Alaska Native	88	15	27	23	18	17	12
Asian	1,482	164	425	243	603	189	123
Black / African American	3,293	524	710	451	1,178	783	374
Hispanic Latino	6,674	657	1,420	1,510	1,617	1,471	1,275
International	201	27	45	28	97	47	34
Multiracial	586	80	171	113	172	102	57
Native Hawaiian / Pacific Islander	57	9	22	12	13	4	8
Unknown / Not Reported	281	37	82	74	54	47	48
White	8,960	1,541	3,030	2,141	1,685	1,322	905

DASHBOARDS

The Office of Institutional Research's dashboards provide users an interactive experience to better visualize data and filter by campus, subject, or course.

- [Course Enrollments \(XLSX\)](#): Includes a five-year trend for course enrollments by campus, subject, and course.
- [Program Dashboard \(XLSX\)](#): Provides headcount data for programs, disaggregated by term, campus, type, and subject.
- [Success by Gender and Ethnicity \(XLSX\)](#): Provides success and withdrawal rates for subject, course, and campus by gender and ethnicity.
- [Summary Dashboard \(XLSX\)](#): Includes enrollment summary, course success rates, KPIs (retention, transfer, & graduation rates), degree/certificate counts, and demographics (gender, ethnicity, age, TSI status, and first gen status).
- [Summary Metrics for Full-time Faculty \(XLSX\)](#): Provides percent of sections taught by full-time faculty, course enrollment trends, ratio of enrollments to full-time faculty, and percent change from prior year.
- [Tarrant County Demographics by Zip Code \(XLSX\)](#): Includes population size, gender, ethnicity, age, educational attainment, mean income, and other social and economic metrics.
- [Core Curriculum Dashboard \(XLSX\)](#): Provides four dashboards showing enrollment and section offerings by term for courses in the Core Curriculum.
- [Student Recruitment & Outreach Monthly Dashboard \(XLSX\)](#): Metrics specific to the SRO team related to applicant and enrollment data, updated February 2024.
- [Trac Cloud Dashboard \(XLSX\)](#): Provides summary, demographic, visit reason, and success metrics for Trac Cloud data by center, campus, and subject.
- [Tutor 24/7 Dashboard \(XLSX\)](#): Provides summary, time of day, day of week, and date metrics for Tutor 24/7 data by subject.
- [TutorTrac Dashboard \(XLSX\)](#): Provides summary, demographic, visit reason, and success metrics for TutorTrac data by term, center, campus, and subject.



2020-2024

PowerBI
journey
begins...and
stops..and
begins

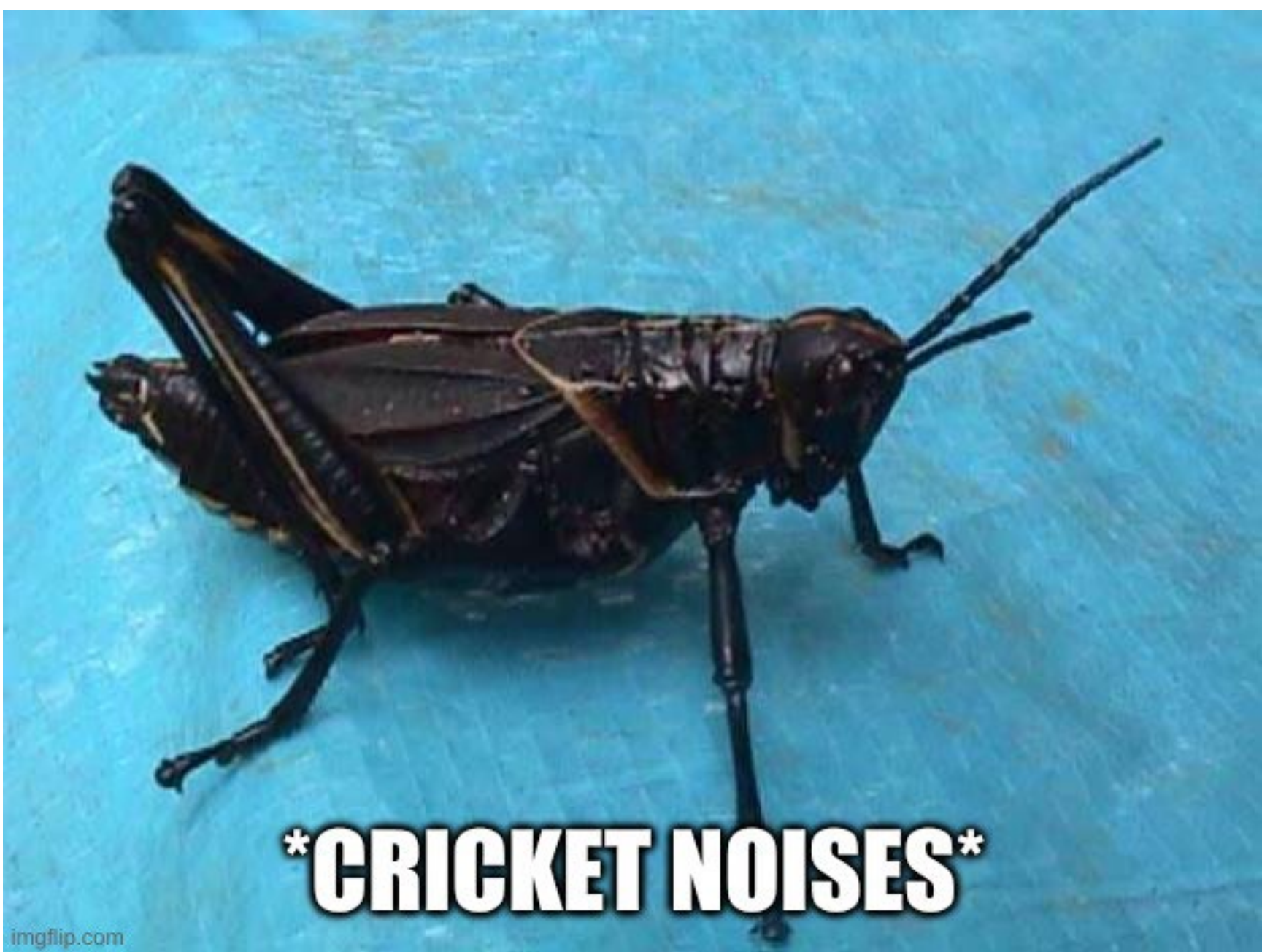


How do we make this work?



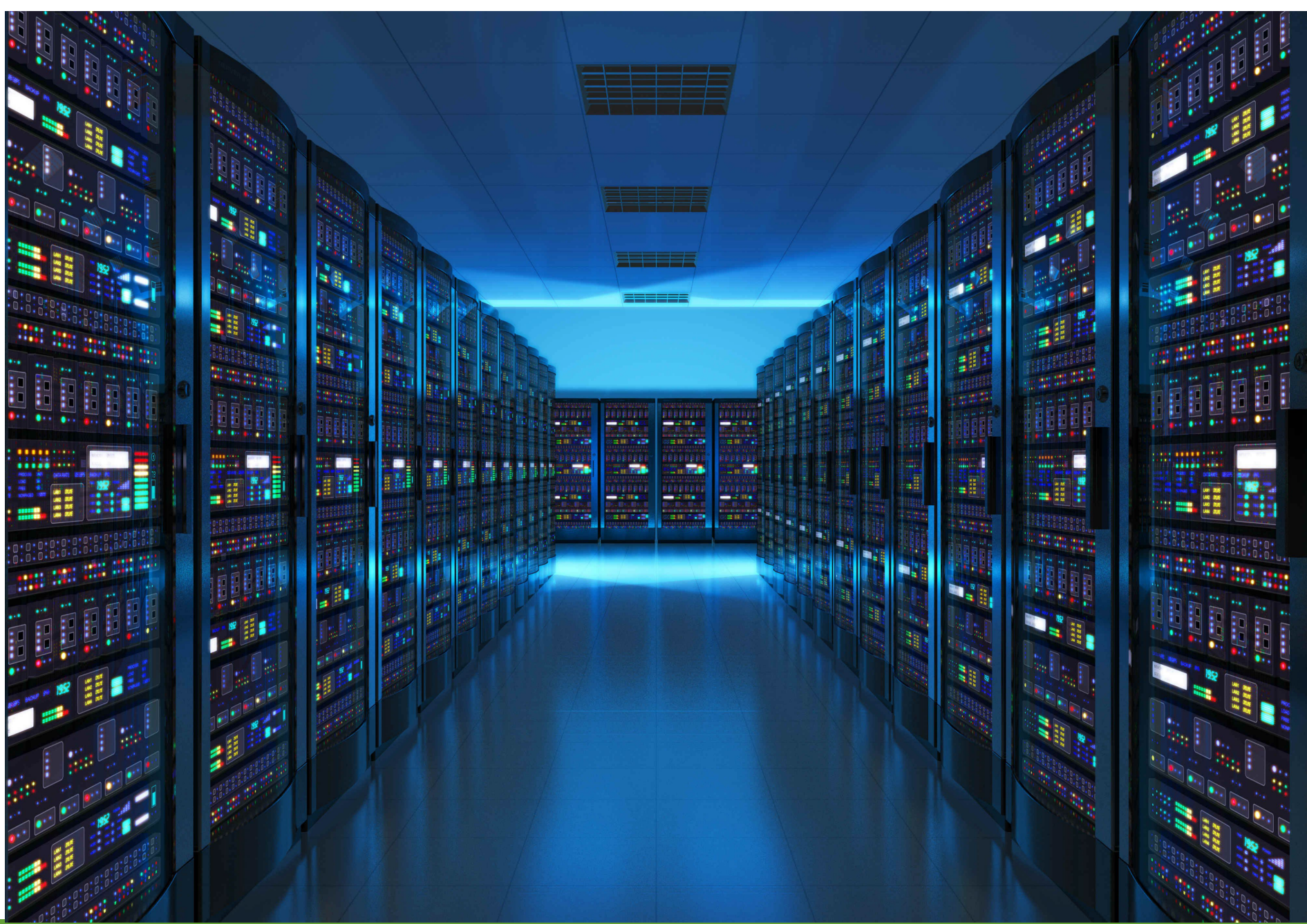
Licensing vs. Capacity

Feature ³	Power BI in Microsoft Fabric free account	Power BI Pro	Power BI Premium per user	Power BI Premium per capacity (includes Microsoft Fabric)
Create reports with Power BI Desktop ⁴	●	●	●	●
Publish reports to share and collaborate		●	●	
Advanced AI, dataflows, datamarts, and XMLA endpoint read/write			●	●
All users can consume content without a paid per-user license ⁵				●
Access to all the Microsoft Fabric workloads, including Data Factory, Data Engineering, Data Warehouse, Data Science, Real-Time Analytics, and Data Activator				●
Model memory size limit ⁶		1 GB	100 GB	400 GB
Refresh rate for Power BI datasets		8/day	48/day	48/day
Maximum storage (Power BI native storage)		10 GB/user	100 TB	Coming soon
Data security and encryption	●	●	●	●



CRICKET NOISES

The Warehouse





imgflip.com

The Gateway



2024 and beyond

Report Creation, Data Hub, and the future



This Photo by Unknown Author is licensed under [CC BY-SA](#)

Logos, Templates and Style Guides...Oh my!

Please use the following fonts:

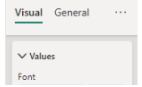
- Segoe UI - Preferred for text & numbers
- Corbel - Backup to Preferred
- DIN
- Segoe UI Light

Standards for visuals:

- Font = Segoe UI
- Background setting for visuals and text boxes = Off
- Borders = Off (except on buttons and tile slicers where fill/background are white)

Dropdown Slicer Settings:

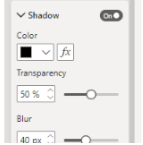
- Select slicer you want to edit on page
- Go to Visual section on Format Pane
- Expand the Values section
- All borders should be off/deselected
- Background should be White #ffffff



Shadow Settings:

- Standard for buttons, dividers, etc.

See below for example



Colors:

tcc-blue: #003b76	tcc-green: #98cb33	tcc-burgundy: #98002b
tcc-blue-darker: #0c2753	tcc-green-darker: #66942e	tcc-yellow: #f1da00
tcc-blue-lighter: #005ca8	tcc-forest: #006838	tcc-white: #ffffff
tcc-teal: #007b96	tcc-purple: #662d90	light grey: #b3b3b3
tcc-teal-lighter: #00acc8	tcc-purple-darker: #4c196d	med grey: #999999
tcc-teal-darker: #005c72	tcc-orange: #f6921e	dark grey: #666666
tcc-blue-pale: #e5ebf6	tcc-orange-darker: #d66000	black: #000000

Divider Options

Sample Buttons

TCC Logos
Height = 60
Width = 300

Data Hub Logos
Height = 60
Width = 100-150

TCC



Slicers | Page Components | IR Logo Editing | Dax Code | Dashboard Page



This Photo by Unknown Author is licensed CC BY-SA-NC

Office of Institutional Research

<Page Name> <Description>

Last Update: Spring 2022 Next Update: Spring 2023 ⓘ

Slicers | Page Components | IR Logo Editing | Dax Code | Dashboard Page

Logos, Templates and Style Guides...Oh my!

Return to IR's DATA HUB **Dashboard Name** TCC | Tarrant County College
SUCCESS WITHIN REACH.

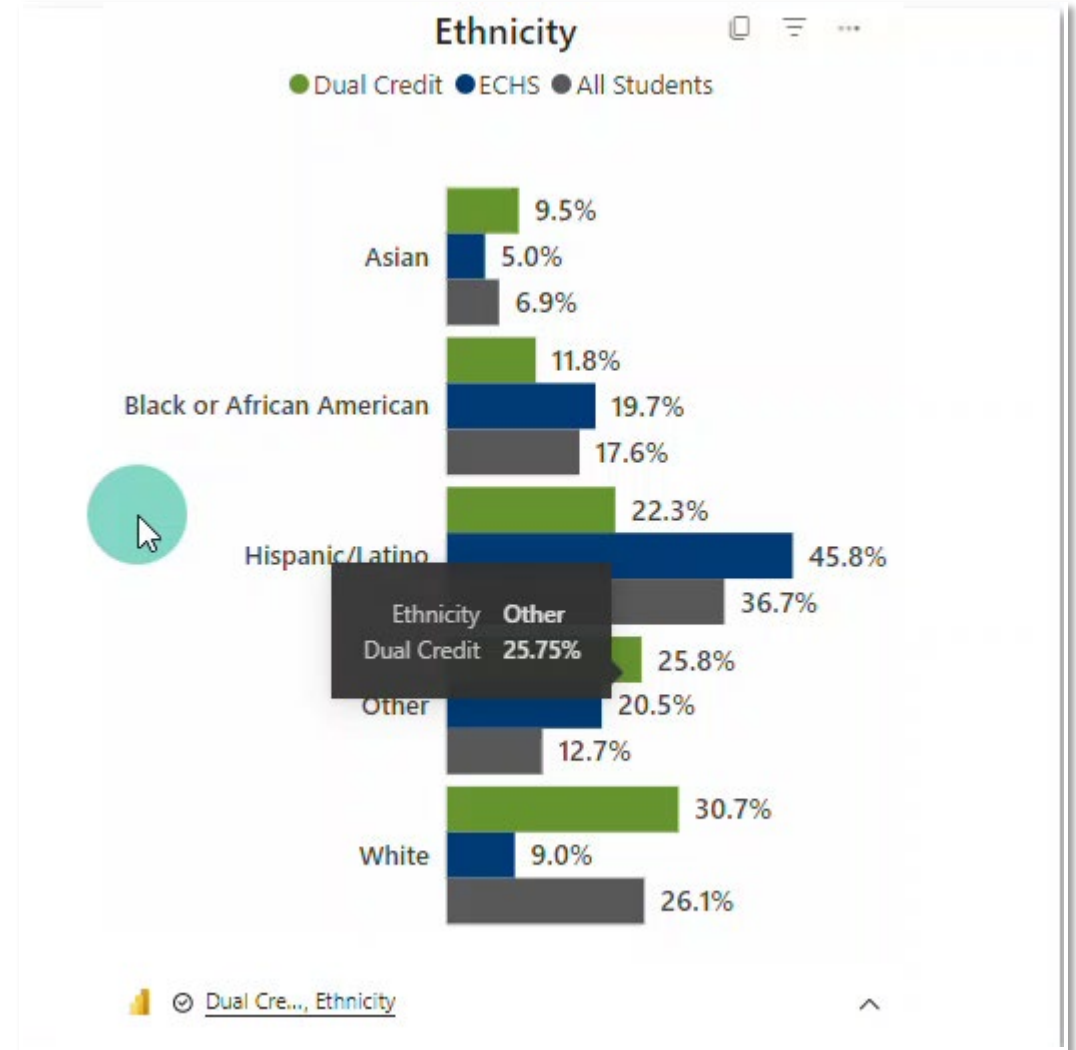
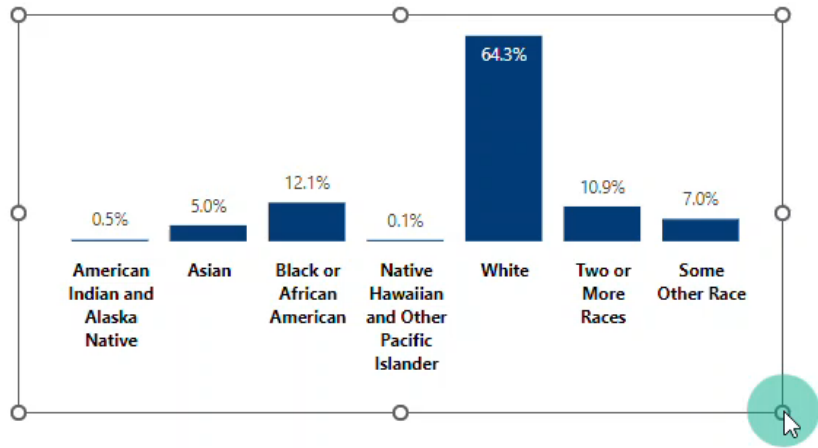
CLEAR

Office of Institutional Research

Slicers | Page Components | IR Logo Editing | Dax Code | Dashboard Page

<Page Name> <Description> Last Update: Spring 2022 Next Update: Spring 2023 ⓘ

Learning Curve and Navigating a New Program



A report a day keeps the data at bay...
But lack of common-sense features, creates forum
fix seekers...

<https://ideas.fabric.microsoft.com/>

What IR Can Offer You [video Link](#)

WELCOME TO IR's DATA HUB

PUBLIC REPORTS & DASHBOARDS

Big Ten
Comparison

IPEDS: Peer
Comparison

Tarrant County
Demographics

*REPORTS & DASHBOARDS WILL OPEN
IN NEW TAB

INTERNAL REPORTS & DASHBOARDS

REQUIRES LOGIN

Completions

Course Enrollment
Trends

Course Success

Dual Credit/ECHS
Flipbook

FTIC Cohort

FTIC First-Year
Outcomes

Programs

Progression

Sections

Statistical
Handbook

*REPORTS & DASHBOARDS WILL OPEN IN NEW TAB

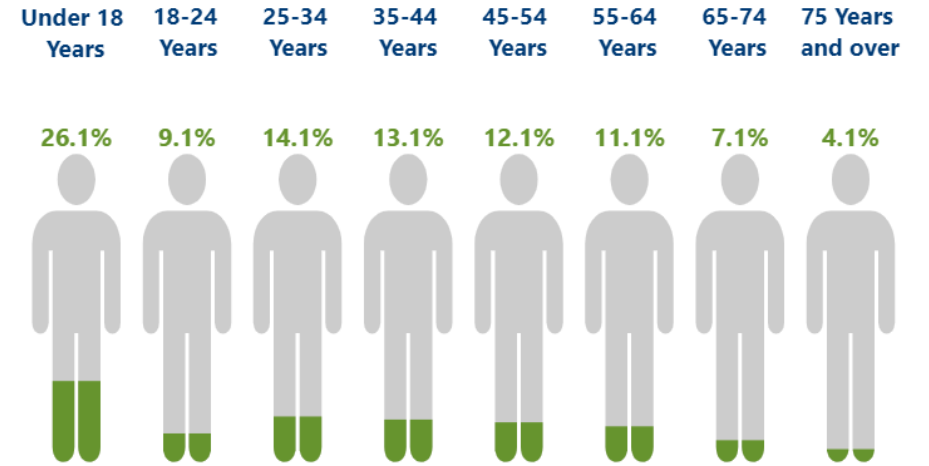
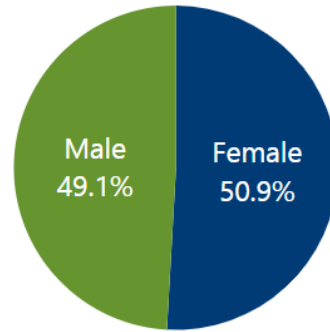
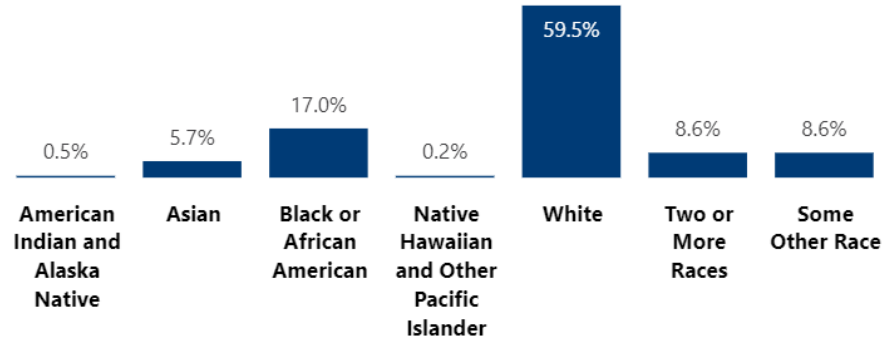
Demographics

MENU

Population for Tarrant County

2,091,953

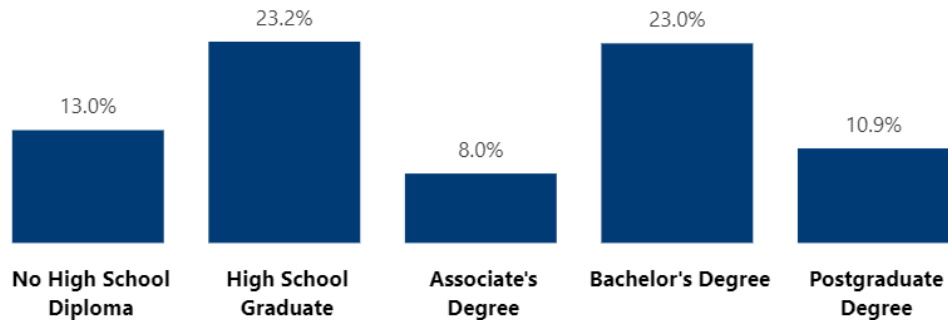
Hispanic or Latino (of any race) = 29.5%



Median Age = 34.8

EDUCATIONAL ATTAINMENT

Age 25 to 64



SOCIAL & ECONOMIC

Median Household Income

\$ 73,545



Mean Household Income

\$ 99,480

Children in Single Parent Families (% of all children)	34.0%
Disconnected Youth	2.5%
Enrolled in Grade 12 (% of total population)	1.5%
Foreign Born	16.3%
Housholds Receiving Food Stamps/SNAP	10.1%
Poverty Level (of all people)	11.3%
Speaks English Less Than Very Well (population 5 yrs and over)	11.2%



Select Headcount/Course Enrollment UG/CE (or both), a time period, and whether to keep or remove credit type N/ contact hours of zero.

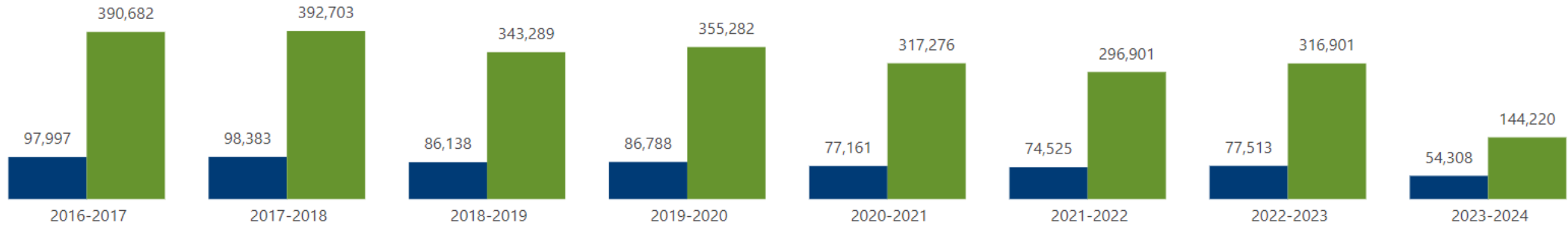


Credit (UG)
 Academic Year
 Q1
 Q3
 QE
 SU
 Keep Credit Type N/ Contact Hours of Zero
 Remove Credit Type N/ Contact Hours of Zero

Non-credit (CE)
 FL
 Q2
 Q4
 SP

Credit (UG), Non-credit (CE) - Academic Year (excludes N/contact hrs=0)

● Headcount ● Course Enrollments



Academic Year	2016-2017		2017-2018		2018-2019		2019-2020		2020-2021		2021-2022		2022-2023		2023-2024		
	Campus	Headcount	Course Enrollments	Headcount	Course Enrollments	Headcount	Course Enrollments	Headcount	Course Enrollments	Headcount	Course Enrollments	Headcount	Course Enrollments	Headcount	Course Enrollments		
CN		22,885	55,719	23,393	58,938	25,030	62,234	26,337	66,570	23,894	55,641	28,691	78,760	29,981	84,602	16,049	31,565
NE		25,459	82,464	25,701	82,932	22,188	68,812	22,779	70,489	26,524	61,613	17,487	53,647	17,282	56,126	11,497	27,464
NW		24,697	74,141	24,511	74,228	20,101	57,862	22,557	63,542	27,624	64,274	18,369	54,616	19,388	56,038	12,529	26,468
SE		22,090	78,165	21,880	76,908	19,556	67,227	19,645	64,516	22,118	54,642	13,433	44,440	13,058	44,608	9,728	21,409
SO		19,519	57,197	20,287	58,085	16,496	48,873	17,423	51,672	21,005	46,319	13,121	37,045	14,851	43,641	10,125	22,540
TR		14,379	42,996	13,685	41,612	12,342	38,281	13,134	38,493	15,029	34,787	9,196	28,393	9,921	31,886	6,696	14,774
Total		97,997	390,682	98,383	392,703	86,138	343,289	86,788	355,282	77,161	317,276	74,525	296,901	77,513	316,901	54,308	144,220

Note: If academic year is selected, current academic year (2023-2024) is incomplete; data are through December 2023.



Campus Slicer

Term

- DT
- CN
- NE
- NW
- SE
- SO
- TR
- 2020FL
- 2021FL
- 2022FL
- 2023FL

Dual Credit & ECHS Student Demographics - District - End of Term 2023FL

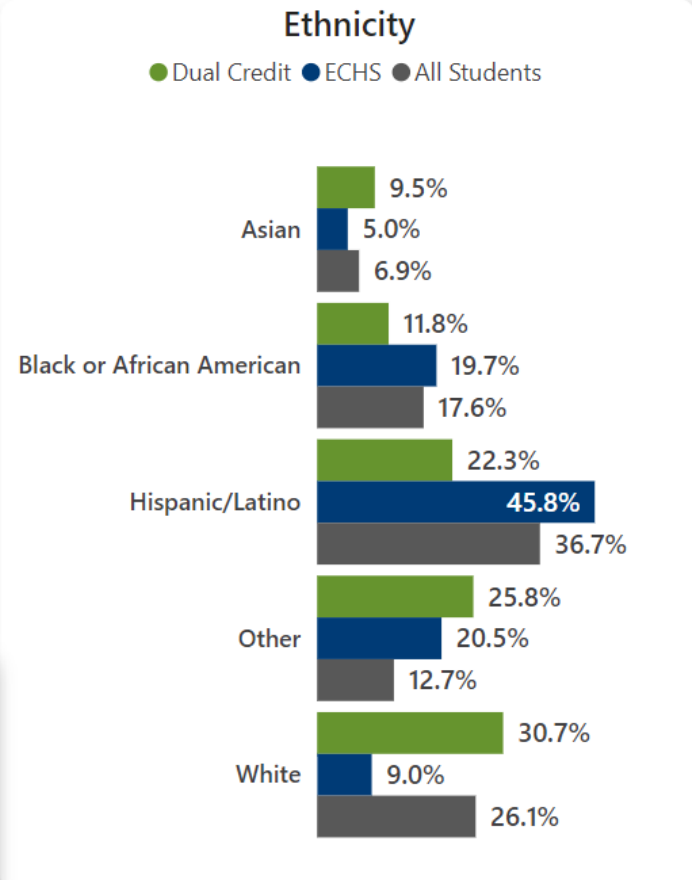
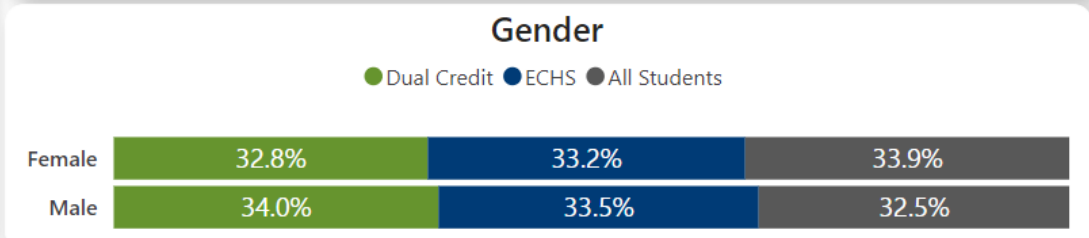
Dual Credit
6,803

ECHS
4,477

All Students
45,447




	Dual Credit		ECHS		All Students	
Gender						
Female	3,787	55.7%	2,520	56.3%	26,150	57.5%
Male	3,016	44.3%	1,957	43.7%	19,297	42.5%
Race/Ethnicity						
American/Alaska Native	21	0.3%	15	0.3%	154	0.3%
Asian	647	9.5%	226	5.0%	3,144	6.9%
Black or African American	802	11.8%	881	19.7%	7,979	17.6%
Hawaiian/Pacific Islander	4	0.1%	3	0.1%	66	0.1%
Hispanic/Latino	1,516	22.3%	2,049	45.8%	16,693	36.7%
Nonresident Alien	7	0.1%	6	0.1%	281	0.6%
Race and ethnicity unknown	1,421	20.9%	767	17.1%	3,528	7.8%
Two or more races	299	4.4%	127	2.8%	1,725	3.8%
White	2,086	30.7%	403	9.0%	11,877	26.1%
Total	6,803	100.0%	4,477	100.0%	45,447	100.0%



NOTE: Campus determined by the student have a course enrollment at that campus in the specified term.
Office of Institutional Research





*We've come so far...
But there's miles to go*

Thank You!

Holly Stovall – holly.stovall@tccd.edu

Bonnie Hurford – bonnie.hurford@tccd.edu

Elizabeth Northern – elizabeth.northern@tccd.edu

Christina Kraines – christina.kraines@tccd.edu

<https://www.tccd.edu/about/research/institutional-intelligence-and-research/dashboards/>

Join the [***What the DAX?!***](#) LinkedIn Group to collaborate and share in a community of Power BI users in Higher Education.