



- 1 THECB Updates
Kara Larkan-Skinner, Ed.D.
Ginger Gossman, Ph.D.

Agenda

- About Data Management and Research (DMR)
- Building a Talent Strong Texas (TST)
- Data Modernization Initiative (DMI)
- DMR Major Updates

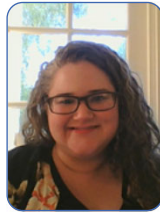
About Data Management and Research (DMR)

3



Kara Larkan-Skinner, Ed.D.,
Assistant
Commissioner
Data
Management &
Research

Policy,
Administration,
Contracts,
Leadership



**Melissa
Humphries,
Ph.D., Deputy
Assistant
Commissioner
of Research &
Analysis**

ERC, Data
Governance,
Data SME,
Policy



Jamie Crowe,
Deputy
Assistant
Commissioner
Data
Management

Data
Infrastructure,
Warehousing,
Visualization



John Dinning,
Director of
Education Data
Center (EDC)

Data
Submission,
CBM & FADS
Reporting



**Ginger
Gossman, Ph.D.,**
Senior Director
Analysis &
Research

Workforce,
Legacy Systems,
Internal
Partnerships,
Communication



**Christina
Zavala, Ph.D.,**
Director of
Student Success

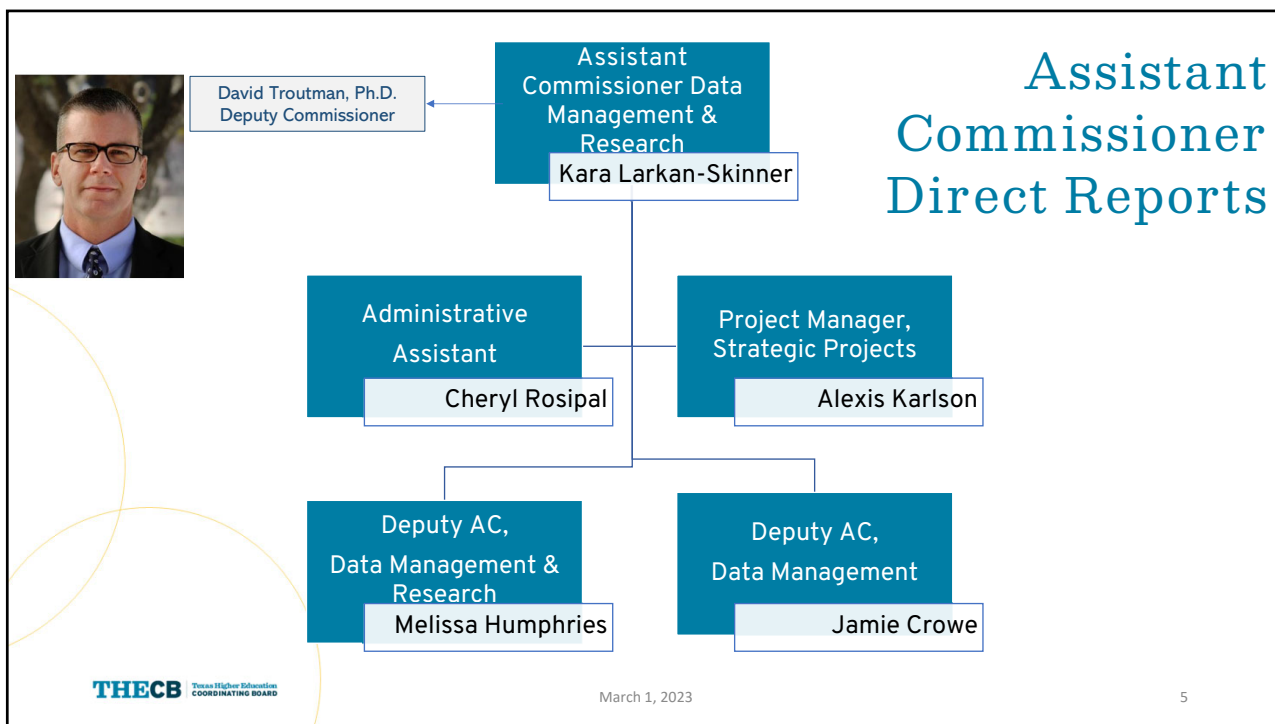
Student
Success, Data
SME



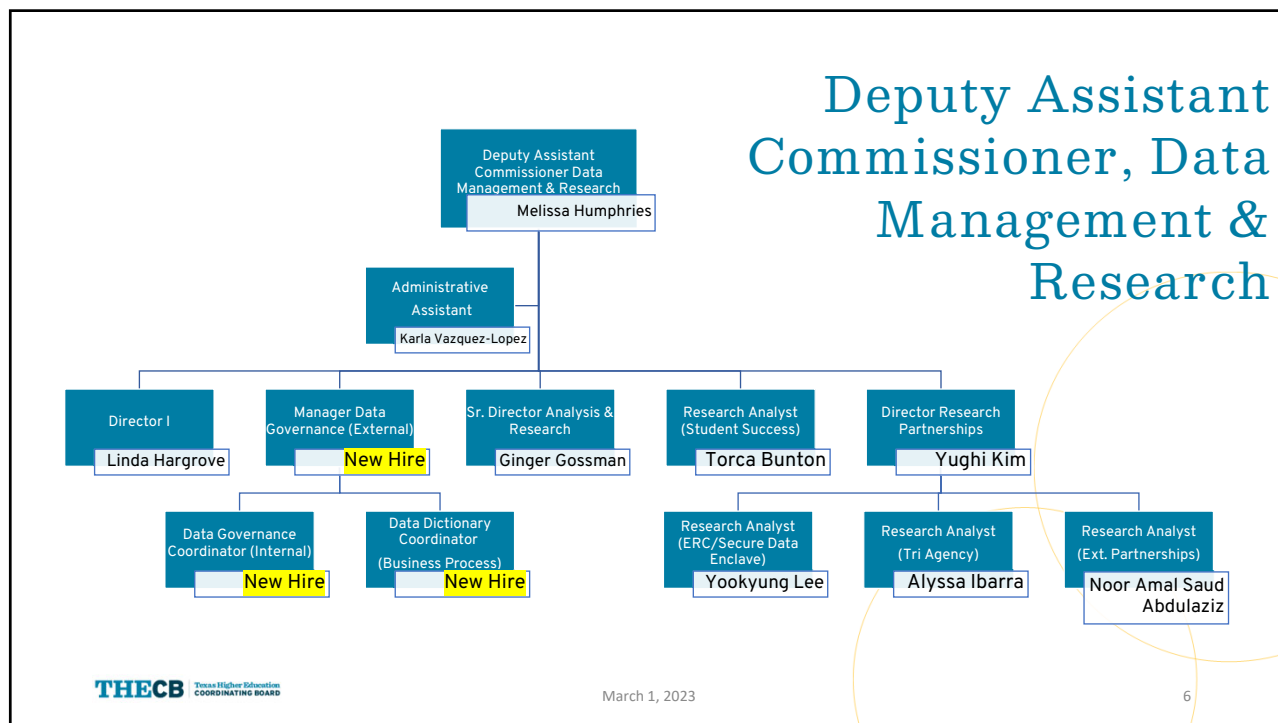
**Yughi Kim,
Ph.D., Director
of Research
Partnerships**

Surveys, Tri-
Agency, ERC,
External
Partnerships

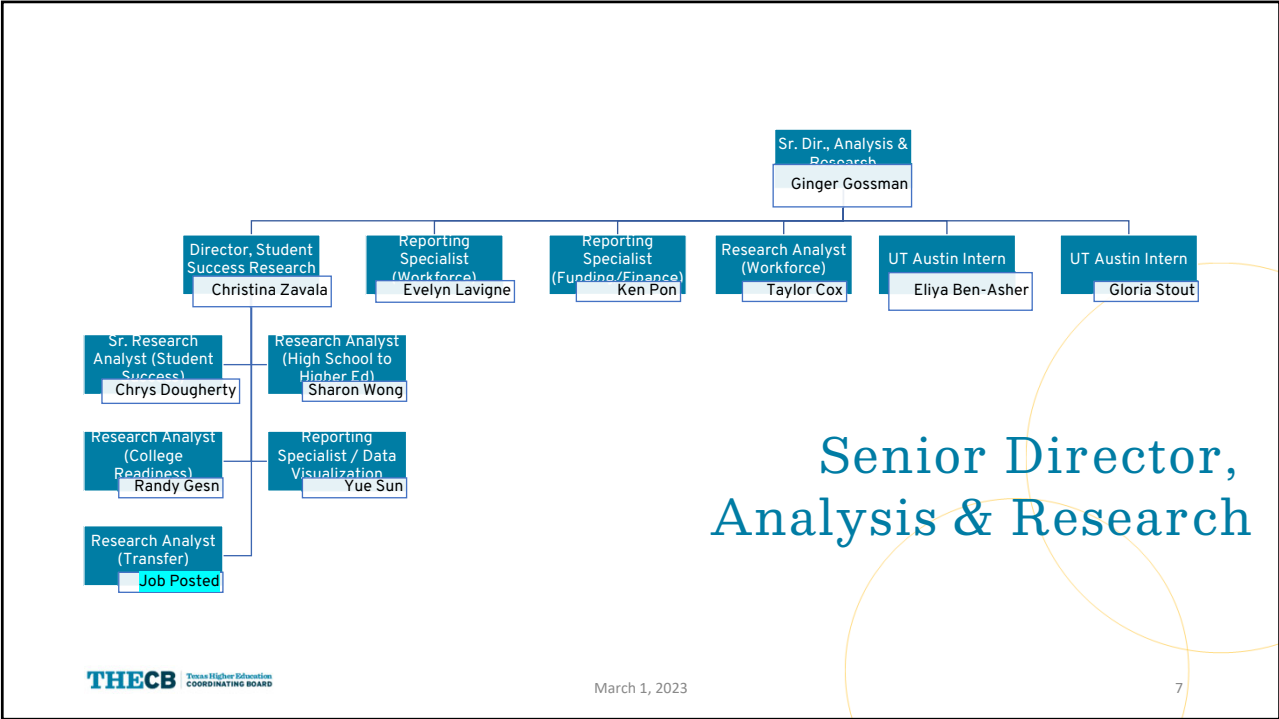
4



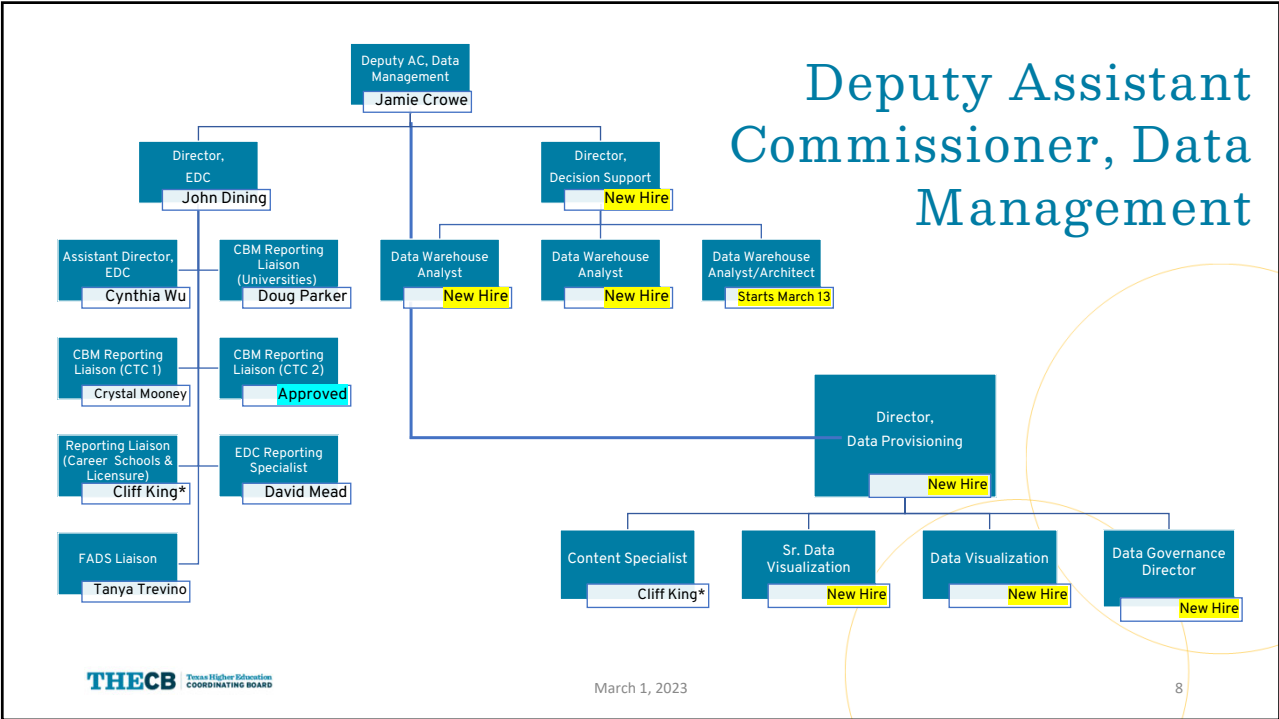
5



6



7



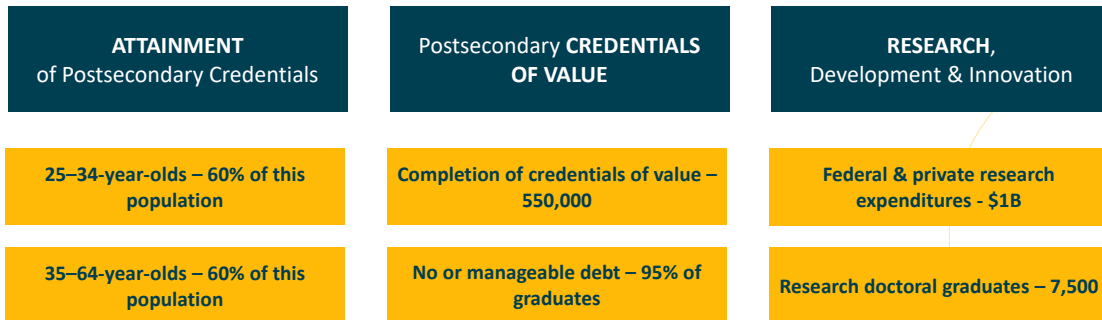
8

Building a Talent Strong Texas

TST Goals

1. Attainment of certificates and degrees so at least 60% of Texans ages 25-64 have a postsecondary credential of value by 2030.
2. Postsecondary credentials of value aligned with workforce demands that will raise incomes for individual Texans while reducing debt.
3. Research, development, and innovation that drives discovery, improves lives, broadens education, and creates new jobs.

TST Primary Indicators



11

TST Webinars

[Introduction to Credential of Value](#)

Led by [Ginger Gossman](#)

January 30, 12:00 – 1:30 PM

[Introduction to Manageable Debt](#)

Led by [Christina Zavala](#)

February 2, 1:30 – 3:00 PM

12

Data Modernization Initiative

13

DMI

- Public portal (data.dot)
- Privileged portal
- Secure enclave

14

Goals of the Data Modernization Initiative

The goal of DMI is to equip internal and external stakeholders with **actionable insight** and **data for decision-making purposes**. We aim to accomplish this through three main priorities:



Redesigned Infrastructure

Design and implement a **modern, flexible, secure data architecture**

Deliver **user-centered value** through improved **data submission methods**, dynamic access, robust governance and security

Design and implement a modern, scalable, accessible, secure, interoperable, and easy-to use **cloud-based architecture** for various data submission and provisioning products.



Expand Data Offerings

Deliver user-centered value through **high-priority data products**

More **readily available reporting and analysis** derived from integrated tri-agency data sets

Increased **support** for strategic use cases of interest to **institutional leaders** and other agency partners



Embed Continuous Improvement

Updated data usage and sharing agreements allow desired reporting while maintaining governance and control

Evolving current business **processes** and **website** to support new offerings

Disciplined product management is in place

Monitoring mechanisms include robust **web analytics**

Routines for **stakeholder engagement, feedback, and involvement**

15

15

How Work is Organized



Redesigned Infrastructure



Expand Offerings



Continuously Improve

To meet each of the goals we have for DMI, we have categorized our suite of projects within three different “workstreams”. Each workstream is developing new capabilities that make use of our modern infrastructure.



Data Submission

Transform the way we collect, validate, and certify data by **creating new data product portals** that **simplify the submission experience** for external users and **seamlessly integrate with our modern architecture**



Data Management

Design and implement a **modern, flexible, secure data architecture**; Deliver **user-centered value** through **dynamic access, robust governance and security**



Data Provisioning

Provide our data in a **user-friendly** way and ensure that it's **accessible by the right people** whenever they need it



DATA GOVERNANCE

Establish governance in our data processes that protect data integrity and security

16

16

DMR Major Updates

17

DMR Major Updates

- Masking Policy
- Legacy Systems
- Data Requests
- CBM Reporting and Deadlines
- Texas Success Initiative
- 5-year Data Reevaluation
- Transfer
- Field of Study
- Recommended Course Seq.
- Non-credit Credentials
- Internal Collaborations

18

DMR Major Updates

- Masking Policy
- Legacy Systems
- Data Requests
- CBM Reporting and Deadlines
- Texas Success Initiative
- 5-year Data Reevaluation
- Transfer
- Field of Study
- Recommended Course Seq.
- Non-credit Credentials
- Internal Collaborations

19

DMR Major Updates

- Masking Policy
- Legacy Systems
- Data Requests
- CBM Reporting and Deadlines
- Texas Success Initiative
- 5-year Data Reevaluation
- Transfer
- Field of Study
- Recommended Course Seq.
- Non-credit Credentials
- Internal Collaborations

Almanac
Accountability
Peer Groups

20

Only updating Interactive

Texas Higher Education
Accountability System

Home
Resources ▾
THECB ▾
60x30TX
Home
Interactive

STATEWIDE

- PUBLIC UNIVERSITIES
- ▶ PUBLIC TWO-YEAR COLLEGES
- PUBLIC HEALTH-RELATED INSTITUTIONS
- ▶ NON-TEXAS & CAREER INSTITUTIONS

[Create Complete Report \(PDF\)](#)

Select a 60x30TX goal below to see related measures for :

60x30: Educated Population

Completion

Marketable Skills

Student Debt

By 2030, at least 60 percent of Texans ages 25-34 will have a certificate or degree.

By 2030, at least 550,000 students in that year will complete a certificate, associate, bachelor's, or master's from an institution of higher education in Texas.

By 2030, all graduates from Texas public institutions of higher education will have completed programs with identified marketable skills.

By 2030, undergraduate student loan debt will not exceed 60 percent of first-year wages for graduates of Texas public institutions.

[Help?](#)

Un...
our C...
new, Inter...
download data, and...
[Updates](#) for the latest important information.

Texas Higher Education
COORDINATING BOARD

March 1, 2023

21

21

DMR Major Updates

- Masking Policy Almanac
- Legacy Systems Accountability
- Data Requests Peer Groups
- CBM Reporting and Deadlines
- Texas Success Initiative

- 5-year Data Reevaluation
- Transfer
- Field of Study
- Recommended Course Seq.
- Non-credit Credentials
- Internal Collaborations

Texas Higher Education
COORDINATING BOARD

March 1, 2023

22

22

DMR Major Updates

- Masking Policy
- Legacy Systems
- **Data Requests**
- CBM Reporting and Deadlines
- Texas Success Initiative
- 5-year Data Reevaluation
- Transfer
- Field of Study
- Recommended Course Seq.
- Non-credit Credentials
- Internal Collaborations

23

DMR Major Updates

- Masking Policy
- Legacy Systems
- Data Requests
- **CBM Reporting and Deadlines**
- Texas Success Initiative
- 5-year Data Reevaluation
- Transfer
- Field of Study
- Recommended Course Seq.
- Non-credit Credentials
- Internal Collaborations

24

DMR Major Updates

- Masking Policy
- Legacy Systems
- Data Requests
- CBM Reporting and Deadlines
- **Texas Success Initiative**
- 5-year Data Reevaluation
- Transfer
- Field of Study
- Recommended Course Seq.
- Non-credit Credentials
- Internal Collaborations

25

DMR Major Updates

- Masking Policy
- Legacy Systems
- Data Requests
- CBM Reporting and Deadlines
- Texas Success Initiative
- **5-year Data Reevaluation**
- Transfer
- Field of Study
- Recommended Course Seq.
- Non-credit Credentials
- Internal Collaborations

26

DMR Major Updates

- Masking Policy
- Legacy Systems
- Data Requests
- CBM Reporting and Deadlines
- Texas Success Initiative
- 5-year Data Reevaluation
- **Transfer**
- Field of Study
- Recommended Course Seq.
- Non-credit Credentials
- Internal Collaborations

27

DMR Major Updates

- Masking Policy
- Legacy Systems
- Data Requests
- CBM Reporting and Deadlines
- Texas Success Initiative
- 5-year Data Reevaluation
- Transfer
- **Field of Study**
- Recommended Course Seq.
- Non-credit Credentials
- Internal Collaborations

28

DMR Major Updates

- Masking Policy
- Legacy Systems
- Data Requests
- CBM Reporting and Deadlines
- Texas Success Initiative
- 5-year Data Reevaluation
- Transfer
- Field of Study
- **Recommended Course Seq.**
- Non-credit Credentials
- Internal Collaborations

DMR Major Updates

- Masking Policy
- Legacy Systems
- Data Requests
- CBM Reporting and Deadlines
- Texas Success Initiative
- 5-year Data Reevaluation
- Transfer
- Field of Study
- Recommended Course Seq.
- **Non-credit Credentials**
- Internal Collaborations

DMR Major Updates

- Masking Policy
- Legacy Systems
- Data Requests
- CBM Reporting and Deadlines
- Texas Success Initiative
- 5-year Data Reevaluation
- Transfer
- Field of Study
- Recommended Course Seq.
- Non-credit Credentials
- **Internal Collaborations**

31

[My Texas Future](#)

[Map My Path](#)

[Advise TX](#)

[Apply TX](#)

[Advi Chatbot](#)

Texas Success Initiative (TSI)

[Credential Engine](#)

Field of Study

[TX CREWS](#)

Data Modernization

Internal Collaborations

32

DMR Major Updates - Contacts

- Masking Policy
- Legacy Systems
- Data Requests
- CBM Reporting and Deadlines
- Texas Success Initiative

[Kara Larkan-Skinner](#)

[Ginger Gossman](#)

[Alexis Karlson](#)

[John Dinning](#)

[Yughi Kim](#)

33

DMR Major Updates - Contacts

[Linda Hargrove](#)

[Christina Zavala](#)

[Christina Zavala](#)

[Christina Zavala](#)

[Melissa Humphries](#)

[Ginger Gossman](#)

- 5-year Data Reevaluation
- Transfer
- Field of Study
- Recommended Course Seq.
- Non-credit Credentials
- Internal Collaborations

34

Questions

THECB Texas Higher Education
COORDINATING BOARD

35



36