



Student Learning Outcome Analysis Made Easy with New Analytical Tool

Background

- SACS Standard

- 3.3.1

The institution identifies expected outcomes, assesses the extent to which it achieves these outcomes, and provides evidence of improvement based on analysis of the results in each of the following areas: (institutional effectiveness)

- 3.3.1.1

educational programs, to include student learning outcomes

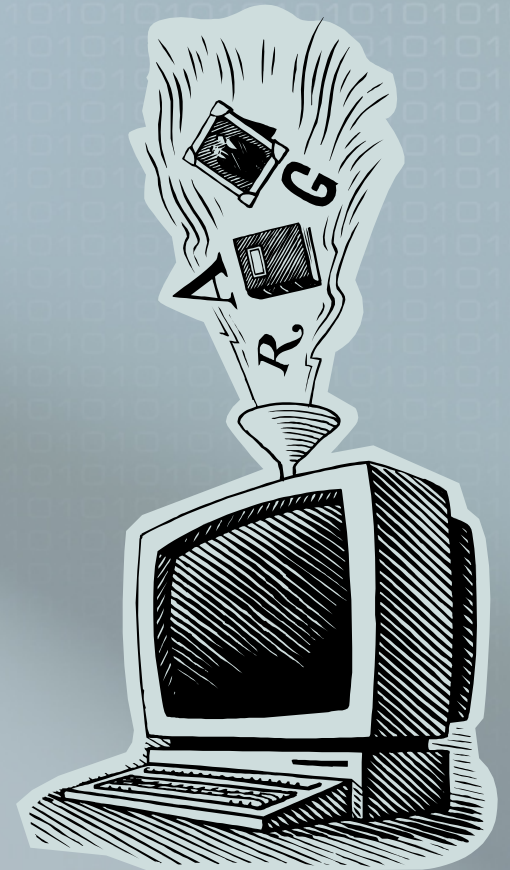
Background

- THECB 2009-13 Strategic Plan
 - Objectives and Outcome Measures, Strategies and Output, Efficiency, and Explanatory Measures
 - Accountability Measures
 - Closing the Gap Measures



Background

- BC Developed SLO for all Courses
- Created a SLO Database
- Developed Policy for SLO
- 2010 – 2012 SLO Data Entered into Database



Background

- BC Learning Outcome Module (LOM)

The screenshot shows a web application interface for Brazosport College. At the top left, there is a logo for Brazosport College. To the right, there is a profile picture of a man and the text "Formerly OASIS". Below the header, there is a navigation menu with "AVAILABLE OPTIONS" and "ADMINIS". A large red octagonal "STOP" sign is overlaid on the center of the page. Below the sign, there is a list of menu items: "Course Availa", "Course Roste", "Certify Roste", "Grade Entry", "LOM - Edit Objec", "LOM - Enter Student", "LOM - Generate Reports", "LOM - Course Report", "LOM - Instructor Report", and "LOM - Student Report". The last four items are enclosed in a red rectangular box. On the left side of the page, there are three colored squares: a light green one, a light blue one, and a light blue one. At the bottom right, there is a red text message that says "have finished."

Background

- Reporting Nightmare



Solution



BC created a hole
to dig out of –

Needed a Solution



ZT

ZogoTech
to the Rescue!



Why ZogoTech?

- Data Imported from POISE
- Easy to Use & Fast
- Instantaneous Reports
 - Ad Hoc Reports
 - Custom Reports
- Quickly Train Others



ZogoTech Demo



The screenshot shows a web browser window with the address bar containing the URL `https://hunter.brazosport.edu/security/login`. The browser's address bar also shows a tab titled "Estudias Enterprise User Lo...". The browser's toolbar includes a home button, a star icon, and a gear icon. The browser's menu bar includes "Convert", "Select", "Page", "Safety", and "Tools". The browser's status bar shows the "zogotech" logo and the page title "Estudias Enterprise User Login".

The main content area of the page displays the text "Please login" in a bold, green font. Below this text are two input fields: "User ID:" and "Password:". A "Submit" button is located below the "Password:" field.

At the bottom of the page, the copyright notice reads: "Copyright 2003-2013 Zogo Technologies, LLC All Rights Reserved, Version 6.4.16".

ZogoTech Demo



Browser address bar: <https://hunter.brazosport.edu/er/report/366>

Browser tabs: Brazosport College - T..., TAIR SLO - By Course

zogotech | logged in as BCNETCullrich (group ir)

Enterprise Reports

Navigation: Favorites | Dashboards | Reports | Templates | Details | [TAIR SLO - By Course](#)

Manage: [Switch to chart](#) | [Remove as favorite](#) | [Make My Own Copy](#) | [Save Changes](#) | [Share](#) | [Delete](#)

Click on the "Field List" button (second from right) to access available fields. Drag and drop them to the pivot table to perform dynamic analysis.

TAIR SLO - By Course

Student Learning Outcomes

Enrolled	Objective Flag	Academic Years Ago	Division and Department	Subject and Course			
Yes	Excluding: (Blank)	(Multiple Items)	MATHEMATICS	1314			
				Academic Year	Main Semester		
				2010-2011	2011-2012	Grand Total	
Faculty Member	Objective	Objective Description	Percent Objectives Met	Percent Objectives Met	Percent Objectives Met		
DETRICK, J 689006630			43.4%	42.7%	43.2%		
Grand Total			43.4%	42.7%	43.2%		

How Are We Using SOL Data?

- SACS Accreditation
- Curriculum Improvement
- Standardization



Thank You!

Cindy Ullrich

Research Analyst

Brazosport College

cindy.ullrich@brazosport.edu

979-230-3415

